

2009 BTM Tournament



Oil Per Board: **50 uL** Oil Pattern Distance: **39 Feet** Volume Oil Total: **24.05 mL** Total Boards Crossed: **481 Boards**

Forward Oil Total: **11.1 mL** Reverse Oil Total: **12.95 mL**
 Forward Boards Crossed: **222 Boards** Reverse Boards Crossed: **259 Boards**

	Start	Stop	Loads	Speed	Crossed	Start	End	Feet	T.Oil
1	2L	2R	3	14	111	0.0	3.9	3.9	5550
2	2L	2R	3	18	111	3.9	11.5	7.6	5550
3	2L	2R	0	18	0	11.5	20.0	8.5	0
4	2L	2R	0	22	0	20.0	30.0	10.0	0
5	2L	2R	0	30	0	30.0	39.0	9.0	0

	Start	Stop	Loads	Speed	Crossed	Start	End	Feet	T.Oil
1	2L	2R	0	30	0	39.0	26.0	-13.0	0
2	2L	2R	3	22	111	26.0	16.7	-9.3	5550
3	2L	2R	2	18	74	16.7	11.6	-5.1	3700
4	2L	2R	2	14	74	11.6	7.7	-3.9	3700
5	2L	2R	0	10	0	7.7	0.0	-7.7	0

Report Date

2/18/2009

Conditioner:

Infinity

TransferType:

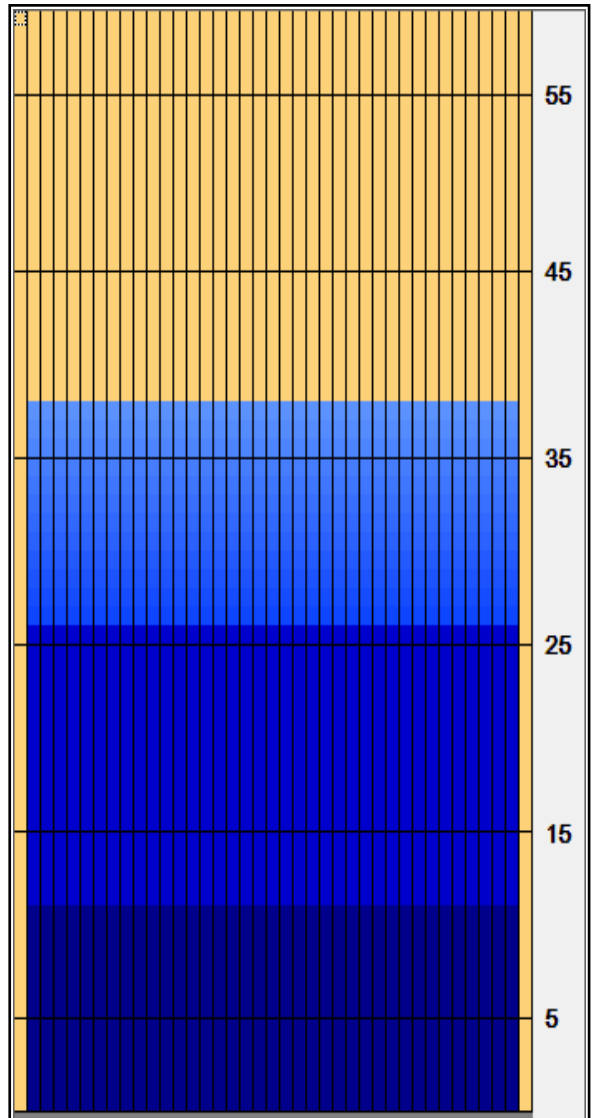
Transfer Brush

Forward Oil

Reverse Oil

Combined Oil

Buff Area

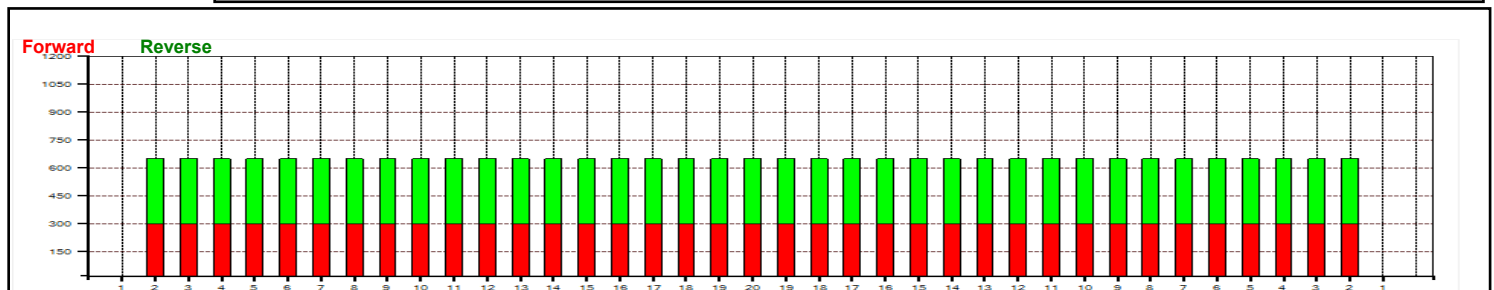


Arrow Zone Ratios

Item	2-5L:16L-20	6-10L:16-20	11-15L:16L-20	16L-20:20-16R	16L-20:20-16R	20-16R:15-11R	20-16R:10-6R	20-16R:5-2R
ul Arrow	650	650	650	650	650	650	650	650
Zone Ratio	1	1	1	1	1	1	1	1



Track Zone Ratios

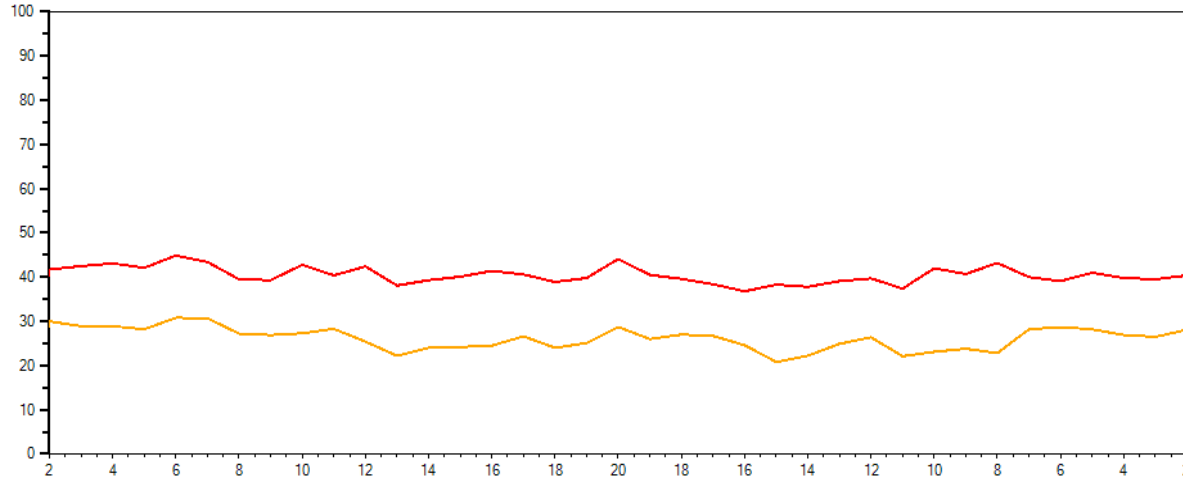
Item	3L-7L:18L-18R	8L-12L:18L-18R	13L-17L:18L-18R	18L-18R:17R-13R	18L-18R:12R-8R	18L-18R:7R-3R
Description	Outside Track:Middle	Middle Track:Middle	Inside Track:Middle	Middle: Inside Track	Middle:Middle Track	Middle:Outside Track
Track Zone Ratio	1	1	1	1	1	1





Lane Tape Data

	CenterName	LaneNumber	TapeDate	Distance	LaneUsage	Memo
	2009 BTM	24	2/17/09	22	0	lon B
	2009 BTM	24	2/17/09	37	0	lon B



	22 ft.	37 ft.
L2	41.7	30
L3	42.5	28.9
L4	43.1	28.9
L5	42.1	28.2
L6	44.9	30.8
L7	43.4	30.7
L8	39.5	27.2
L9	39.3	26.9
L10	42.8	27.3
L11	40.4	28.3
L12	42.4	25.4
L13	38.1	22.2
L14	39.3	24
L15	40.1	24.2
L16	41.4	24.5
L17	40.6	26.6
L18	38.9	24
L19	39.8	25.1
C20	44.1	28.7
R19	40.5	26
R18	39.6	27
R17	38.4	26.7
R16	36.8	24.6
R15	38.3	20.8
R14	37.8	22.2
R13	39.1	24.9
R12	39.7	26.4
R11	37.4	22.1
R10	42	23.1
R9	40.7	23.8
R8	43.2	22.8
R7	40	28.2
R6	39.1	28.7
R5	41	28.2
R4	39.8	26.9
R3	39.5	26.5
R2	40.4	28.1

	22' Tape	Criteria	Pass/Fail	37' Tape	Criteria	Pass/Fail
Avg. L3-7	43.2	> 10	PASS	29.5	> 10	PASS
Avg. L8-L17	40.39	> 70% of L3-7 < 130% of L18-R18	PASS	25.66	> 70% of L3-7 < 130% of L18-R18	PASS
Avg. L18-R18	40.58	< 80	PASS	26.16	< 80	PASS
Avg. R17-R8	39.34	> 70% of R3-7 < 130% of L18-R18	PASS	23.74	> 70% of R3-7 < 130% of L18-R18	PASS
Avg. R7-R3	39.88	> 10	PASS	27.7	> 10	PASS
Ratio Left	0.94	< 3.0	PASS	0.89	< 3.0	PASS
Ratio Right	1.02	< 3.0	PASS	0.94	< 3.0	PASS